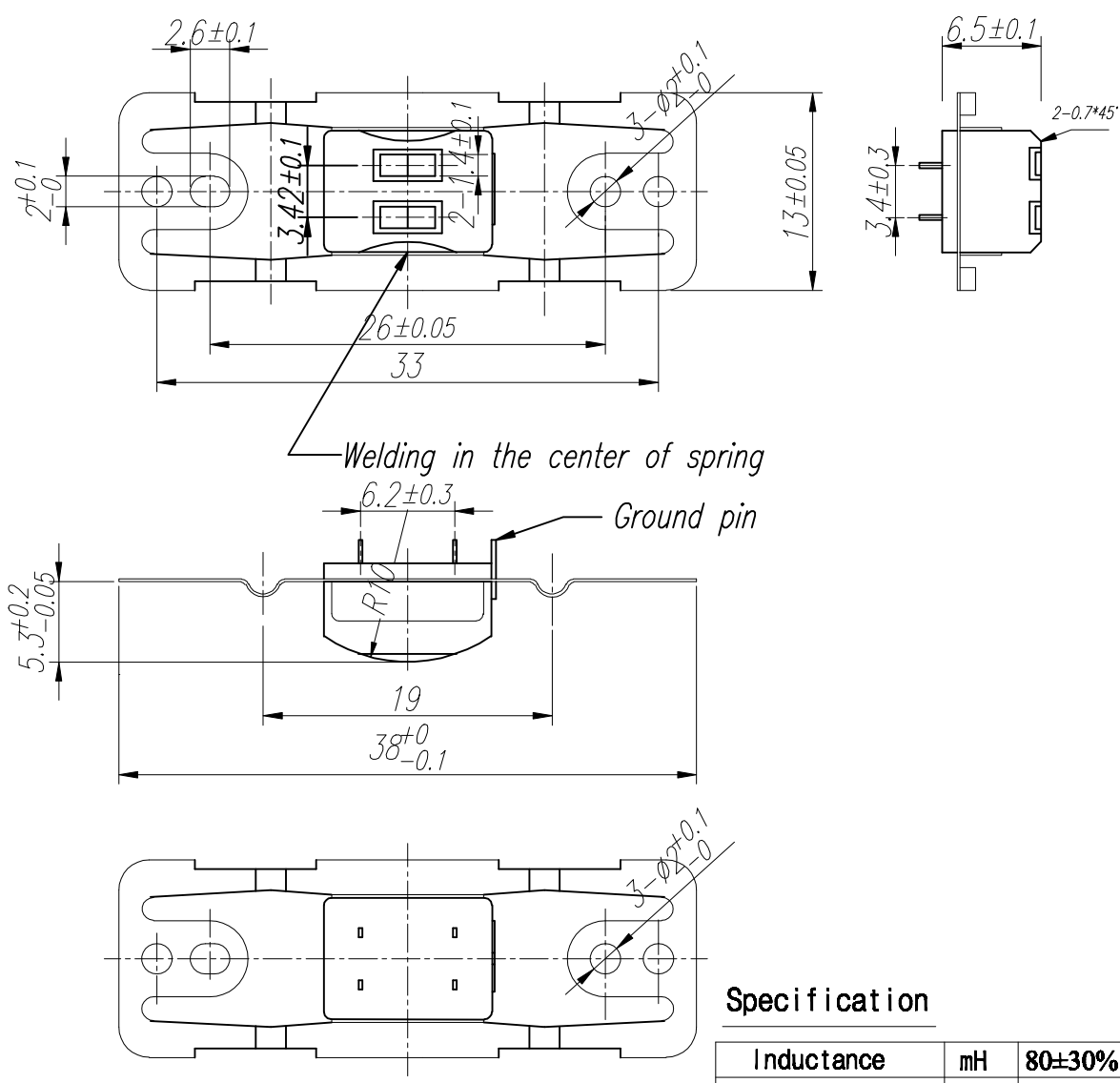


| | | | |
|-----|--------|------|---------|
| SYM | ECN NO | DATE | APPRVAL |
| △ | | | |



Specification

| | | | | |
|-------------------|-------|------------|----------------|---------|
| Inductance | mH | 80±30% | 1KHz | 100 µ A |
| DC Resistance | Ω | 200±25% | DC | at 20° |
| Recording Density | BPI | 210 | | |
| Tape Speed | IPS | 7.5 | Measuring Tape | |
| Read Output | mVp-p | 30±25% | PM50-78 | |
| Insulation R | MΩ | 50 | 250V DC | |
| Core Earth | Ω | 100 Max | 100 µ A | |
| Gap Length | µm | 12.5±6 | | |
| Track Width | mm | 1.5±0.1 | | |
| Head Life | Times | 500,000Min | | |
| Spring thickness | mm | 0.17 | | |
| Welding height | mm | 6.5/5.3 | | |

UNLESS OTHERWISE NOTED:
 1) DIMENSIONS ARE IN MILLIMETERS
 2) TOLERANCES:
 .X ± .1
 .XX ± .05
 ANGLES ± 0°~30'

SCALE ⁴/₁ MM REV A
 CORE MATERIAL: PERMALLOY
 MODEL Dual spring head (6.5/5.3)
 DWG. NO

2 TRK READ HEAD

JINSUNG DIGITECH

DWG DGN CHK APP
 ZHC