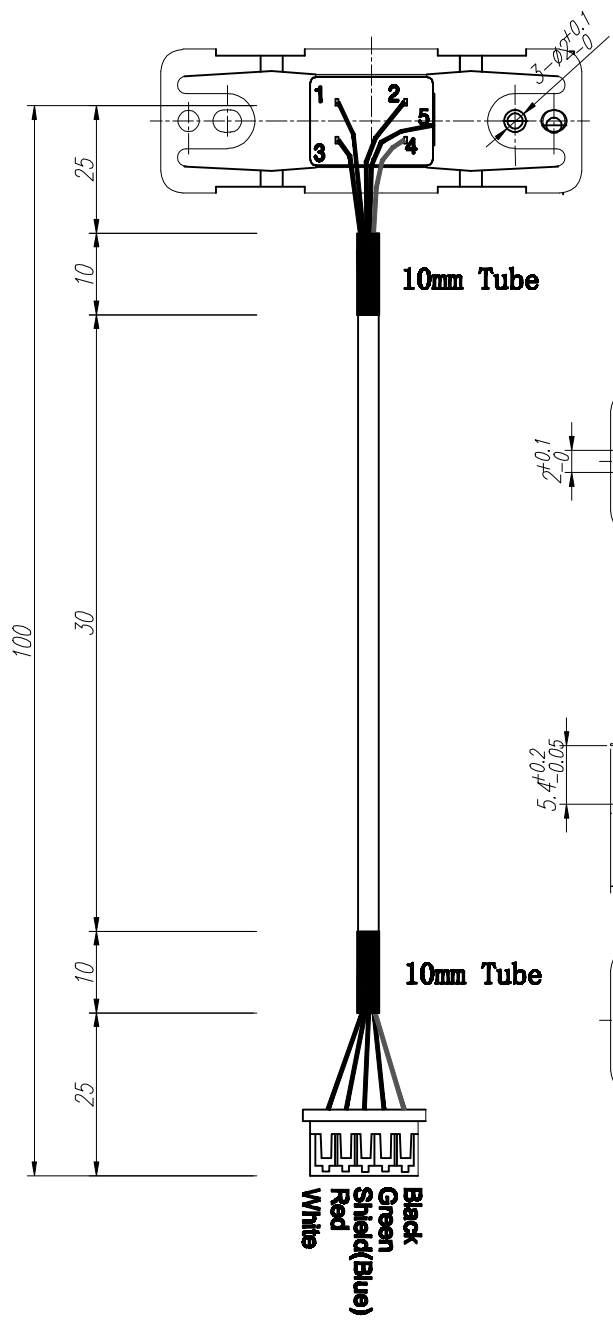
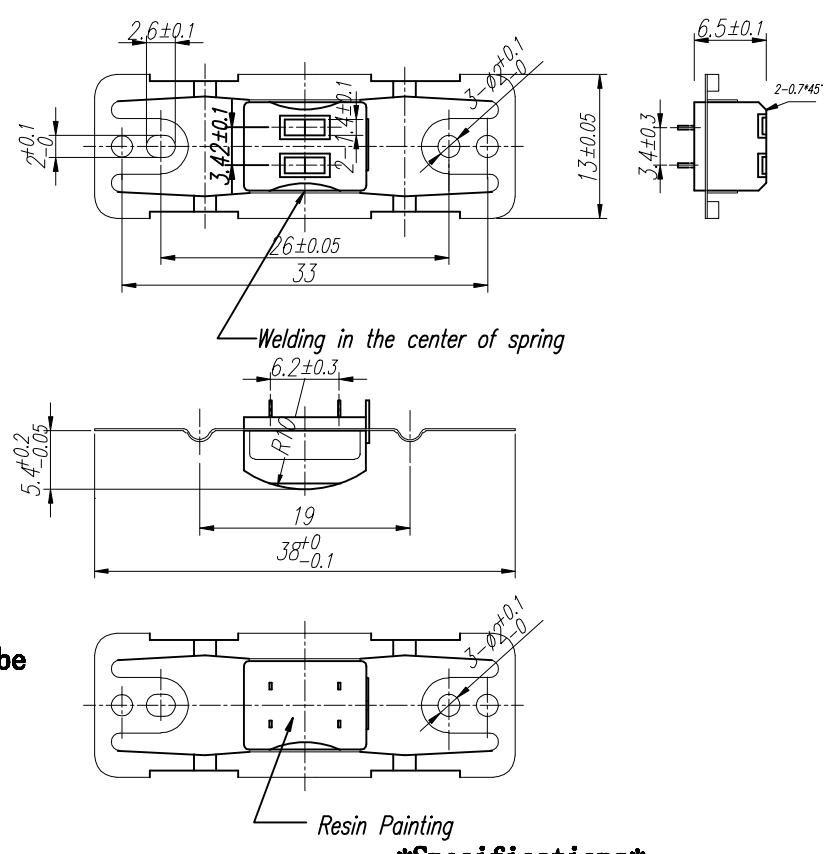


SYM	ECN NO	DATE	APPRVAL
△			



- 1. White
- 2. Red
- 3. Green
- 4. Black
- 5. GRD (Blue)



Molex 51021-0500

Specifications
Inductance: 28mH ± 30%
DC Resistance: 140 Ω ± 25%
core material: permalloy
Spring thickness : 0.17mm
Welding height : 6.5/5.4
Cable : AWG32 4p shield cable

MATERIAL			Q'TY	1	FINISH	BARREL	
TOLERANCE	X.X = ±0.1		SCALE	2/1	MM	REV	A
	X.XX = ±0.05		DATE				
ANGLE =							
DWG	DGN	CHK	APP	TITLE	2 TRK READ HEAD		
ZHC				MODEL	JS 1060-100		
JINSUNG DIGITECH				DWG. NO	17091509		